

# Wastewater

## Simplex Grinder Packages



### Applications

- Little Giant Simplex Grinder Packages are ideal for residential sewage waste transfer where high head conditions exist

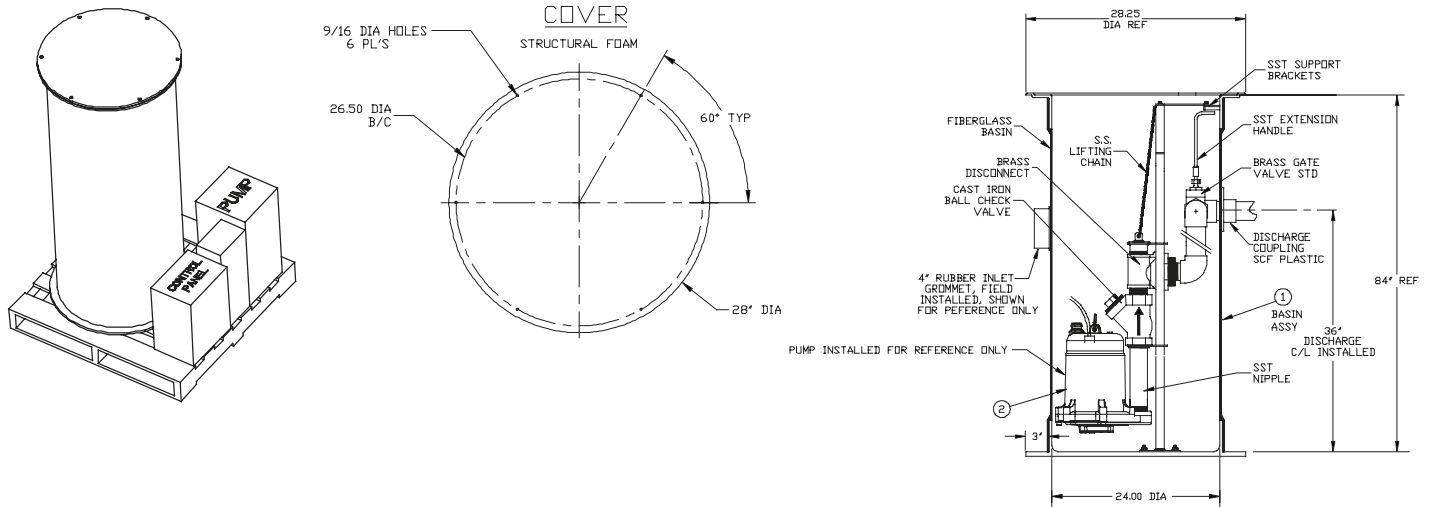
### Pump Features

- 2 hp single-phase sewage grinder pump
- Capacitor start/run motor with built-in overload protection for over-current and over-temperature damage
- Epoxy coated cast iron finish for corrosion resistance and durability
- Designed with a seven-vane, angled face, non-clogging, balanced brass impeller

### System Features

- Check valve
- Control panel with integral pump starting components
- Three control float switches
- Stainless Steel float bracket
- Junction box
- Basins are heavy-duty fiberglass material. Simplex basins are 24" diameter, and are available in 60", 72" and 84" depths
- 4" adapt-a-flex inlet grommet
- Structural foam cover, stainless steel rail system with sealing flange, discharge pipe disconnect, lifting chain, ball check valve and shut-off valve
- Easy-to-follow installation instructions

## Engineering Data



## Complete Packages

Item No	Model No	Pump Voltage	Basin Size (diameter x depth)	Basin Description	Basin Construction
520827	GP-SMPX	230 V	24" x 60"	BS2460FG	Fiberglass
520828	GP-SMPX	230 V	24" x 72"	BS2472FG	Fiberglass
520829	GP-SMPX	230 V	24" x 84"	BS2484FG	Fiberglass

## Pumps

Item No	Model No	Voltage
520865	GP-M231-15-H130	230 V
520855	GP-M201-15-H130	208 V

## Basin Specifications

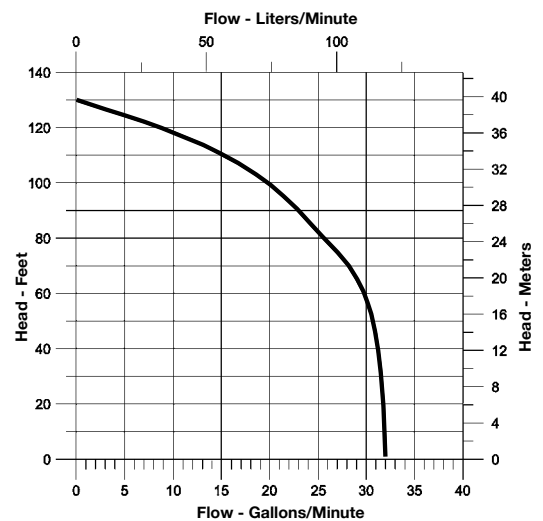
Item No	Model No	Construction	Size
113371	BS2460FG	Fiberglass	24" x 60"
113372	BS2472FG	Fiberglass	24" x 72"
113373	BS2484FG	Fiberglass	24" x 60"

## Simplex Grinder Package Basin/Cover Assemblies

(does not include pump, floats or panel)

Basin/Cover Assemblies are pre-assembled with stainless steel rail system with sealing flange, discharge pipe disconnect, stainless steel float bracket, lifting chain, junction box, shut-off valve, and ball check valve.

## Performance Curve



## Control Panel

Item No	Model No	Voltage
513374	MGP-1C18-2	208/230

## Control Floats

Item No	Model No	Voltage
950266	CFSW	115/230



P.O. Box 12010  
 Oklahoma City, OK 73157-2010  
 Phone: 1.800.701.7894  
 Fax: 1.800.678.7867  
 www.LittleGiantPump.com