

GENERAL NOTES

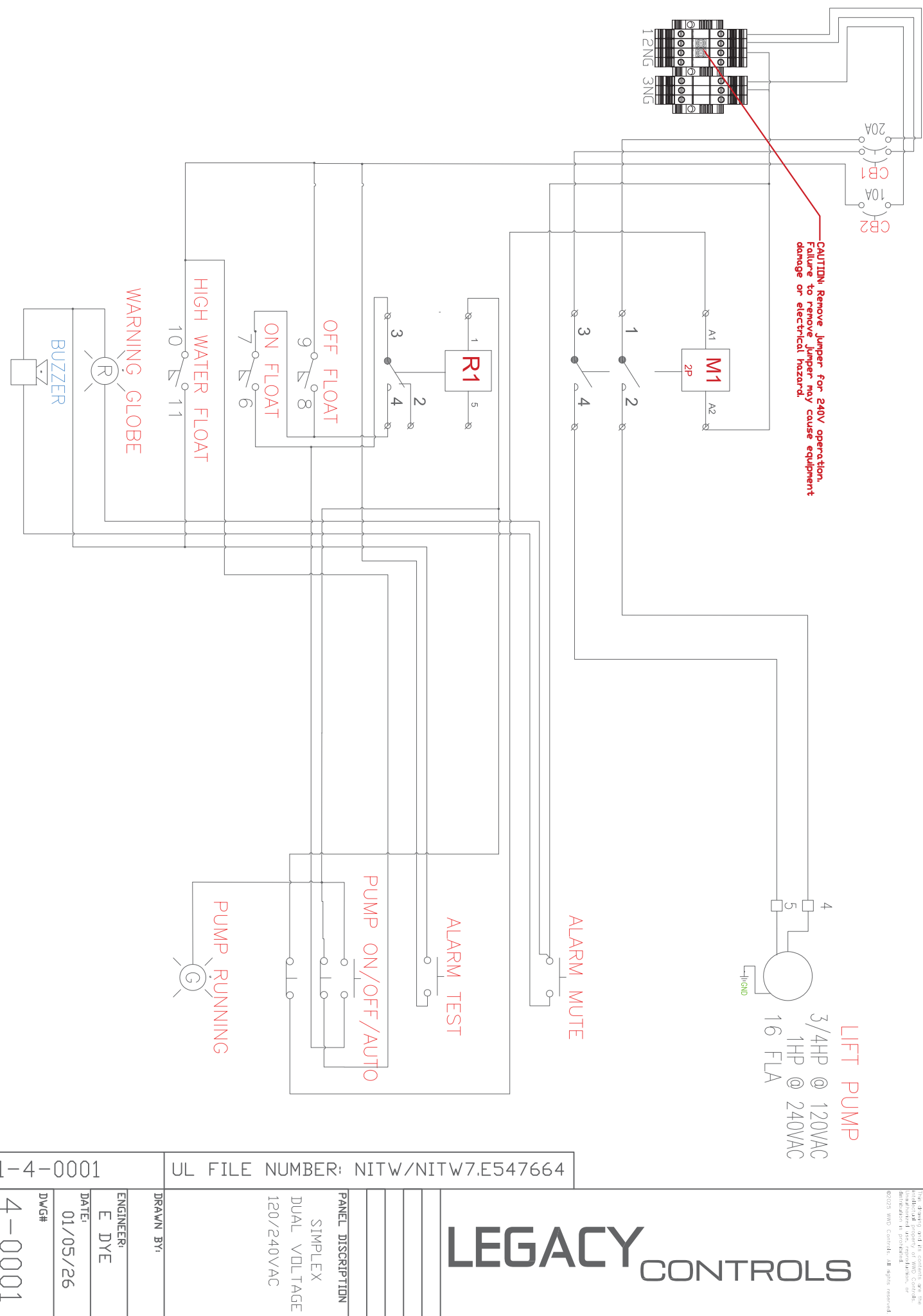
- This panel is suitable for dual-voltage operation. It is factory-configured for 120 V AC via terminal one (pin 1). For 240 V AC operation, remove the grouping between terminal 2 and neutral.
- All motor shall incorporate internal overload protection.
- Alarm circuit shall not exceed 5 A.
- Main panel disconnect shall be supplied and installed in the field.

WARNING: PLEASE CHECK SCHEMATICS TO VERIFY PANEL VOLTAGE!!!

SAFETY NOTES

- Field wiring shall be copper conductors rated 60 °C minimum.
- Terminal size shall be specified to 0.79 Amp.
- Alteration of this panel voids the manufacturer's warranty.

NEUTRALS FROM SEPARATE POWER AND ALARM FEEDS SHALL BE LANDED ON THE SAME NEUTRAL BUS IN THE FEEDER PANEL TO MAINTAIN EQUIPOTENTIAL BONDING. ENSURE ADEQUATE FAULT CURRENT RETURN PATH FOR PROPER OVERCURRENT DEVICE OPERATION, AND PREVENT NEUTRAL OVERLOAD OR HAZARDS DUE TO MISWIRING



LEGACY CONTROLS
 The drawing and its contents are the intellectual property of Legacy Controls, Inc. All rights reserved.
 ©2025 WNC Controls. All rights reserved.

CP-001-4-0001 UL FILE NUMBER: NITW/NITW7.E547664

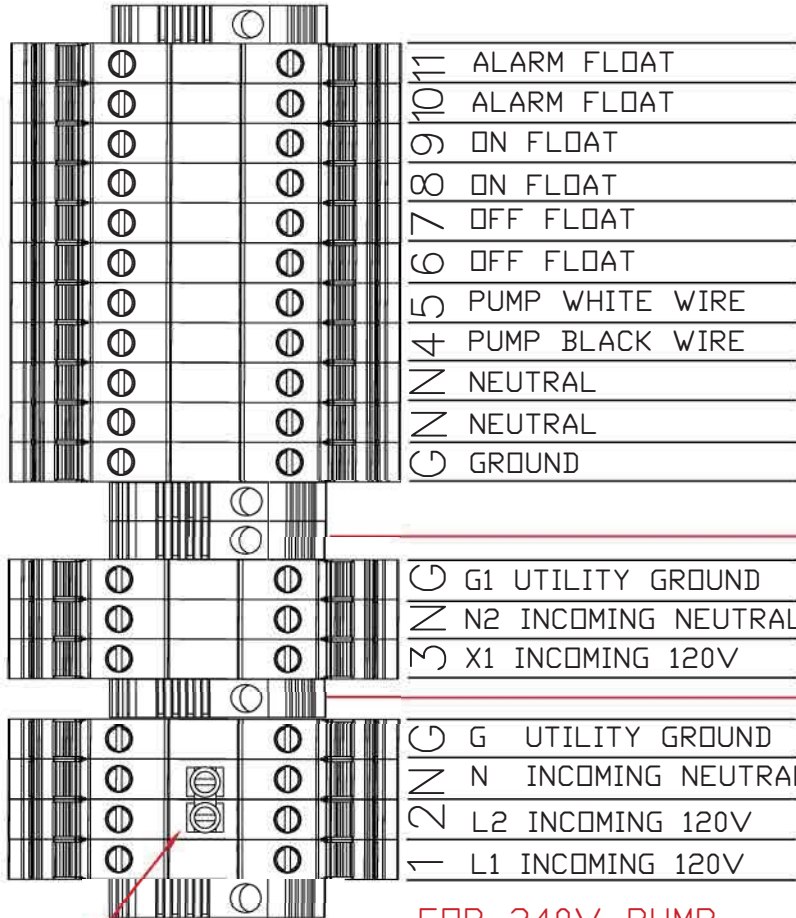
PANEL DESCRIPTION	SIMPLEX DUAL VOLTAGE 120/240VAC
DRAWN BY:	
ENGINEER:	E DYE
DATE:	01/05/26
DWG#	4-0001
PAGE #	1

TIGHTENING TORQUE FOR TERMINAL BLOCKS IS 4.425 in-lbs.

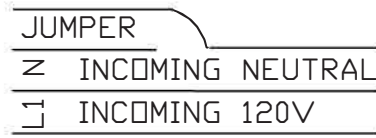
PANEL MODEL #

CP-001-4-0001

CAUTION: Remove jumper for 240V operation. Failure to remove jumper may cause equipment damage or electrical hazard.



FOR 240V PUMP



FOR 120V PUMP

SEPERATE ALARM FEED

TERMINAL CONNECTION DIAGRAM

TERMINAL BLOCKS
PINOUT DIAGRAM

26-10 AWG, 600V, 60C