

GRAPHIC INSTALLATION GUIDE

Specifications

Pump Power Receptacle

120VAC or 240VAC, 15A, 60 Hz
(voltage depends on model/part number)

Pump Power

120VAC or 240VAC, 13A or 15A, 60 Hz
(voltage/amps depends on model/part number)

Alarm Power

120VAC, 60 Hz
(240VAC, 60 Hz available; consult factory)

Auxiliary "Dry" Contacts

24VDC/120VAC, 500mA maximum

Power Consumption

14 Watts maximum (alarm condition)

Enclosure

Type 3R, Outdoor

Certifications

FCC Part 15 (US and Canada)
CSA (US and Canada)

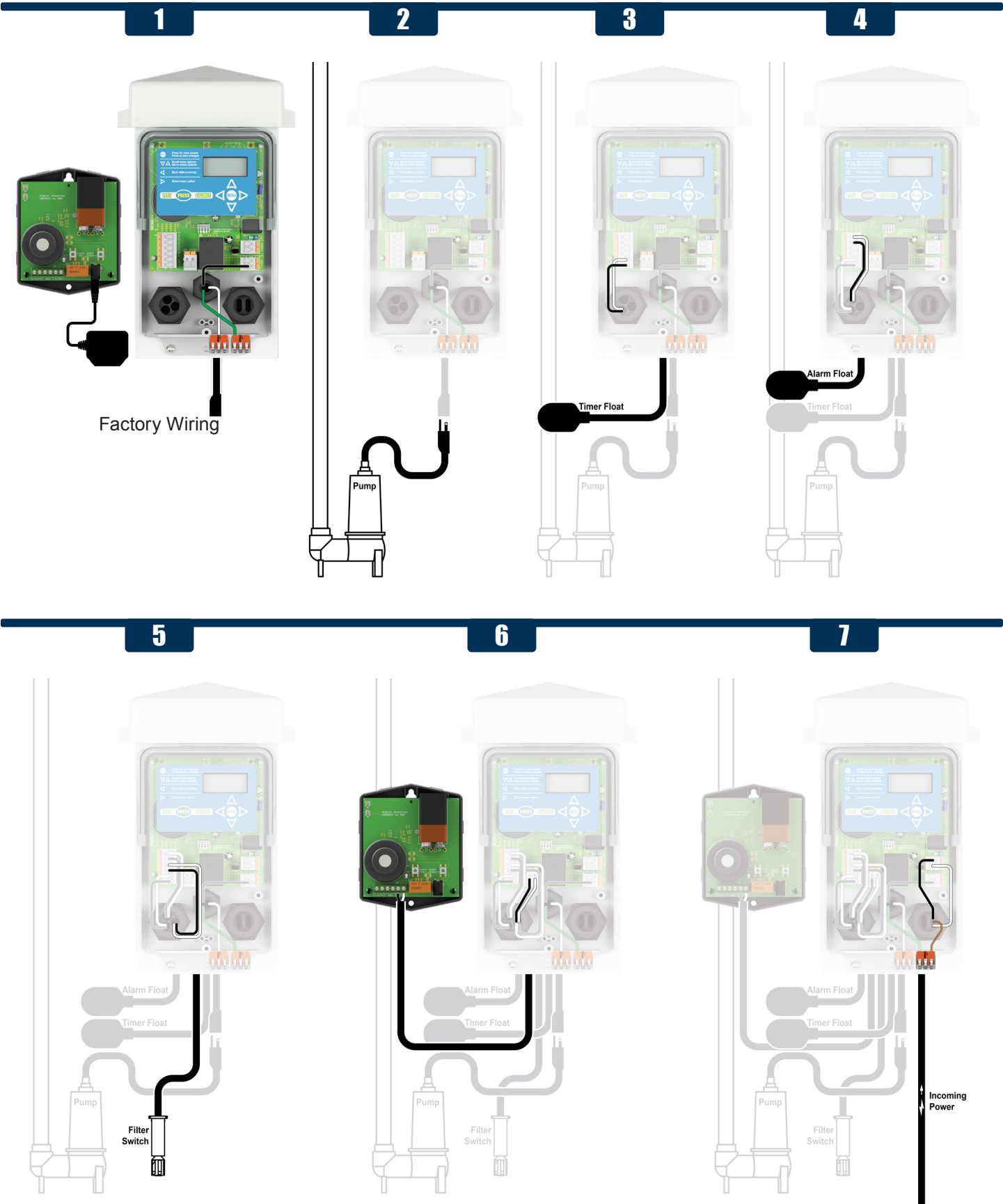
Three-Year Limited Warranty

Safety Guidelines

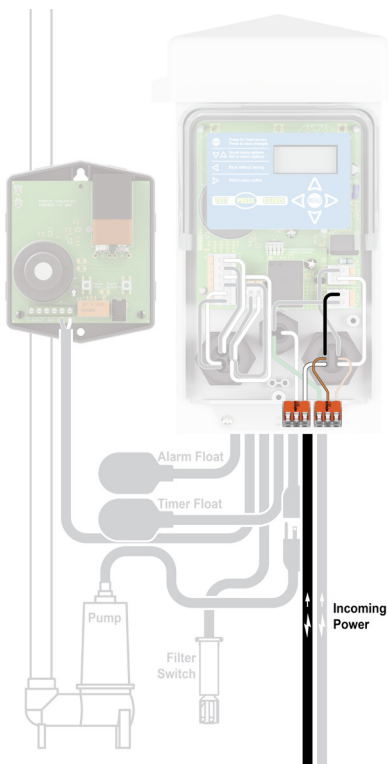
Before proceeding with the installation or operation of this product, read all instructions thoroughly, as well as complying with all federal, state and local codes, regulations, and practices. This product must be installed by qualified personnel familiar with all applicable local electrical and mechanical codes. Refer to the National Electrical Code (NFPA 70). Failure to properly install and test this product can result in personal injury or equipment malfunction.

1. DISCONNECT POWER when installing or servicing the product. Failure to disconnect all power sources could result in serious injury or death.
2. NEVER enter a flooded space without proper Personal Protective Equipment (PPE). Always wear dielectric rubber boots and other applicable protective equipment when water is on the ground or floor and you must service an energized pump, alarm system, or product.
3. DO NOT enter the water if the water level is higher than that of the protection your PPE offers or if your PPE is not watertight.
4. DO NOT use this product with or near flammable liquids.
5. DO NOT install this product in locations classified as hazardous or in explosive atmospheres as defined by any applicable electrical safety code.

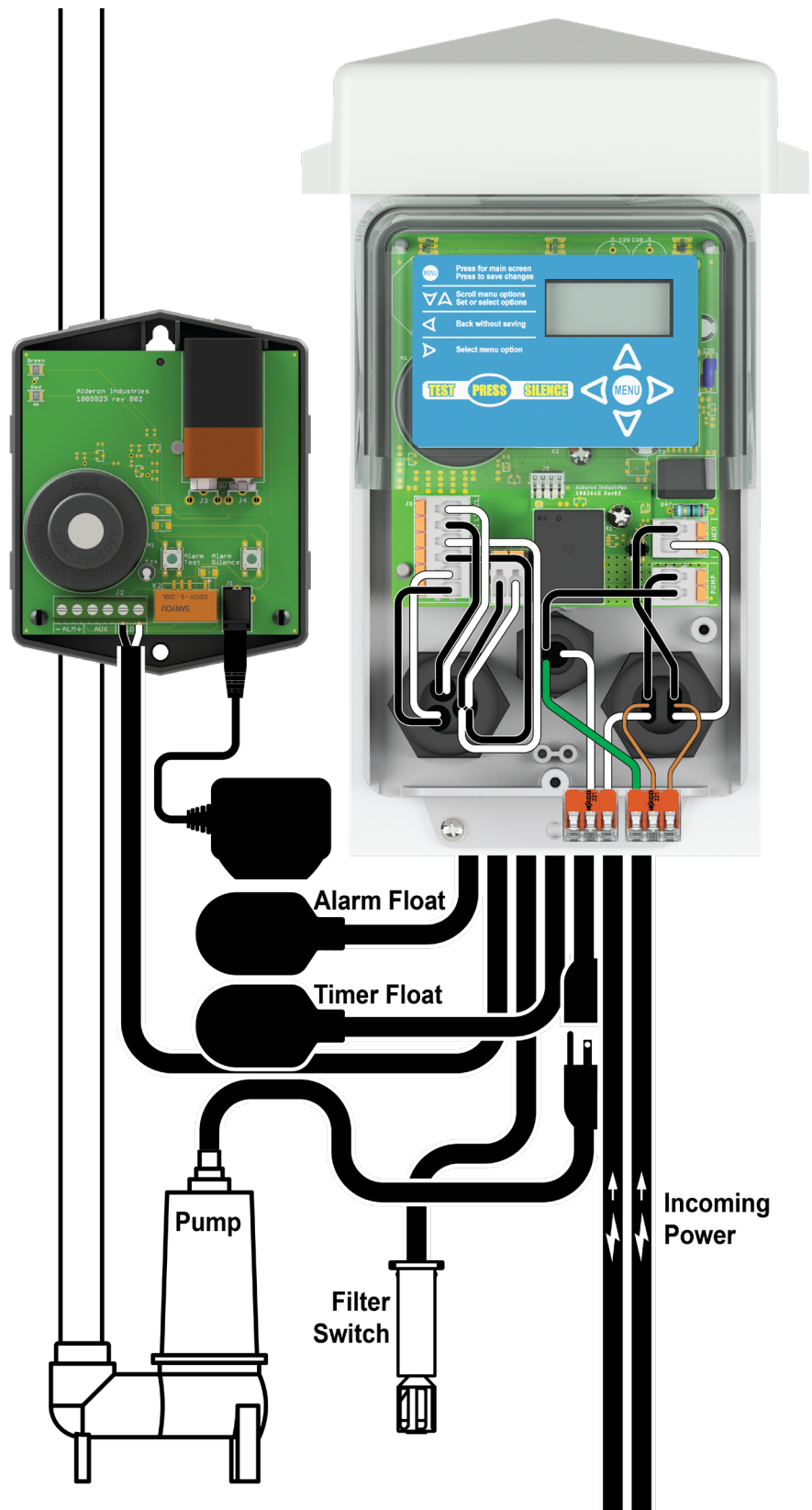
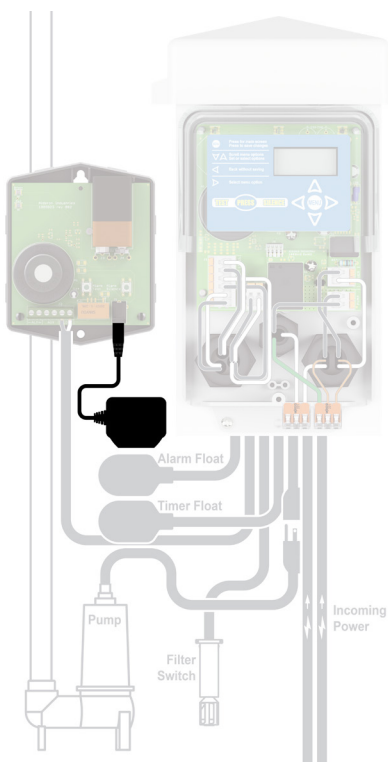
2 Incoming Power Sources



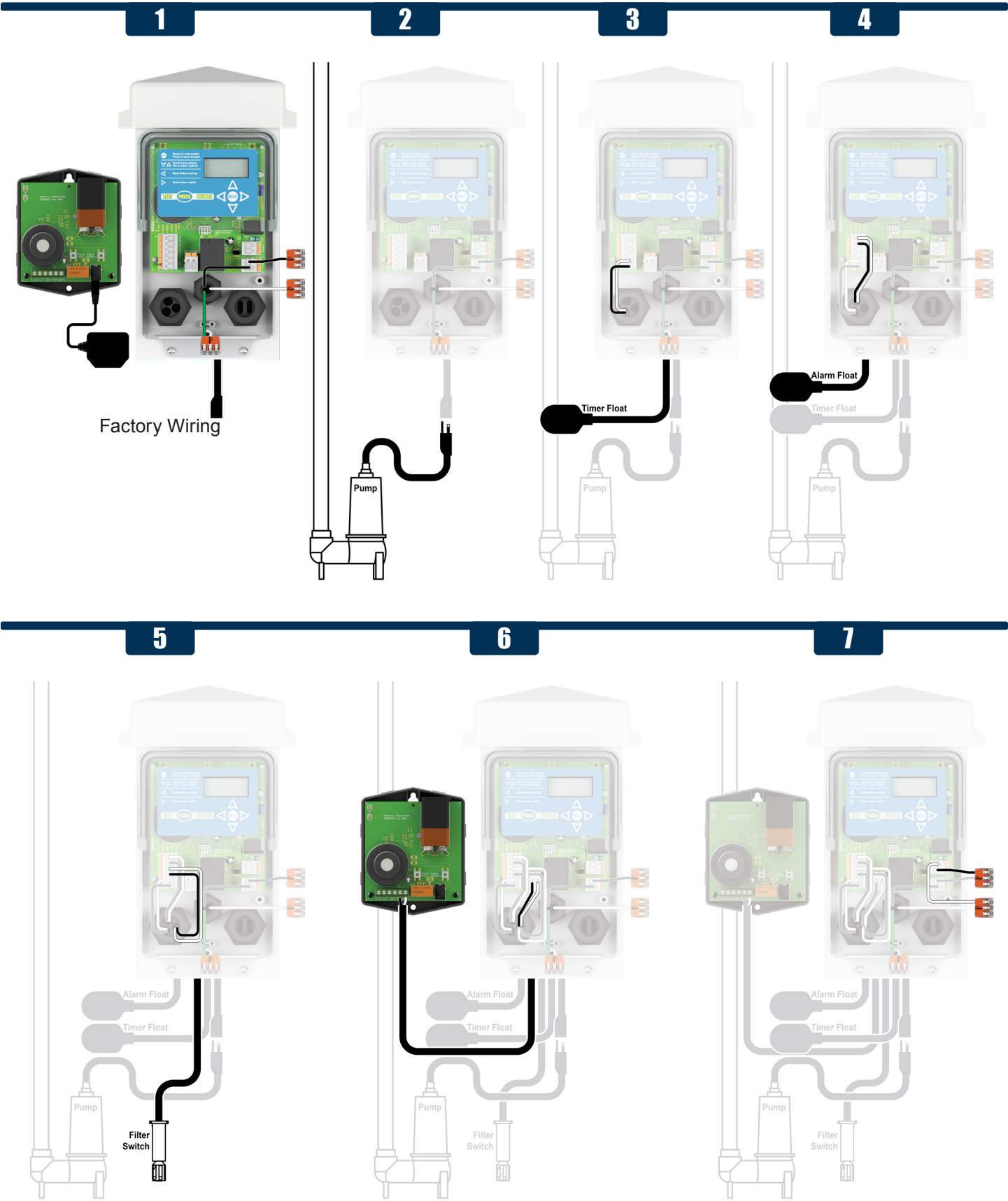
8



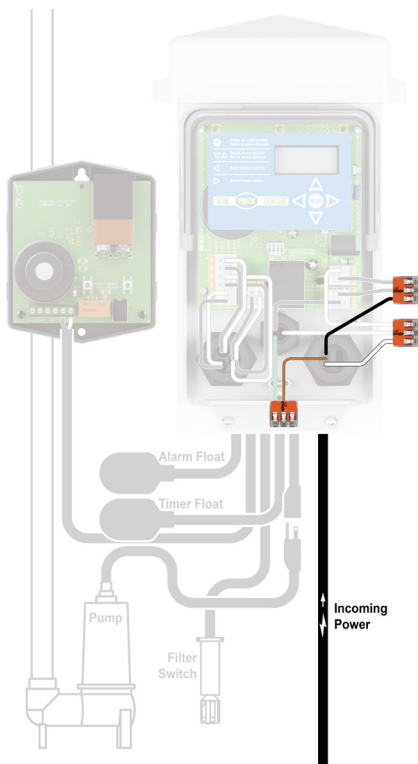
9



1 Incoming Power Source



8



9

